



GMT Constitutional Area 7, Group B

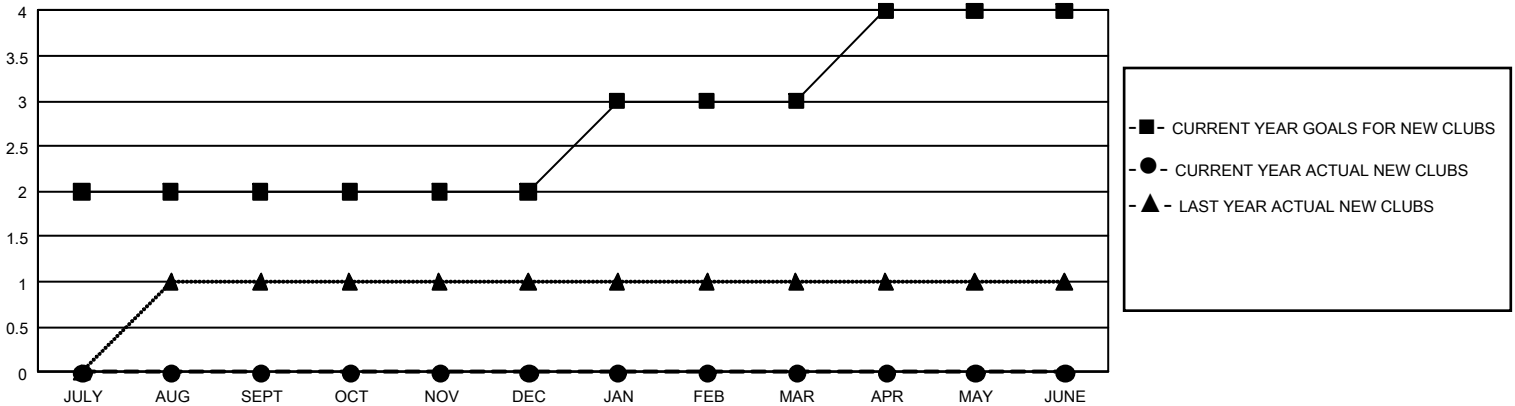
GMT: OPEN

REPORT DOES NOT INCLUDE CLUBS IN UNDISTRICTED AREAS.

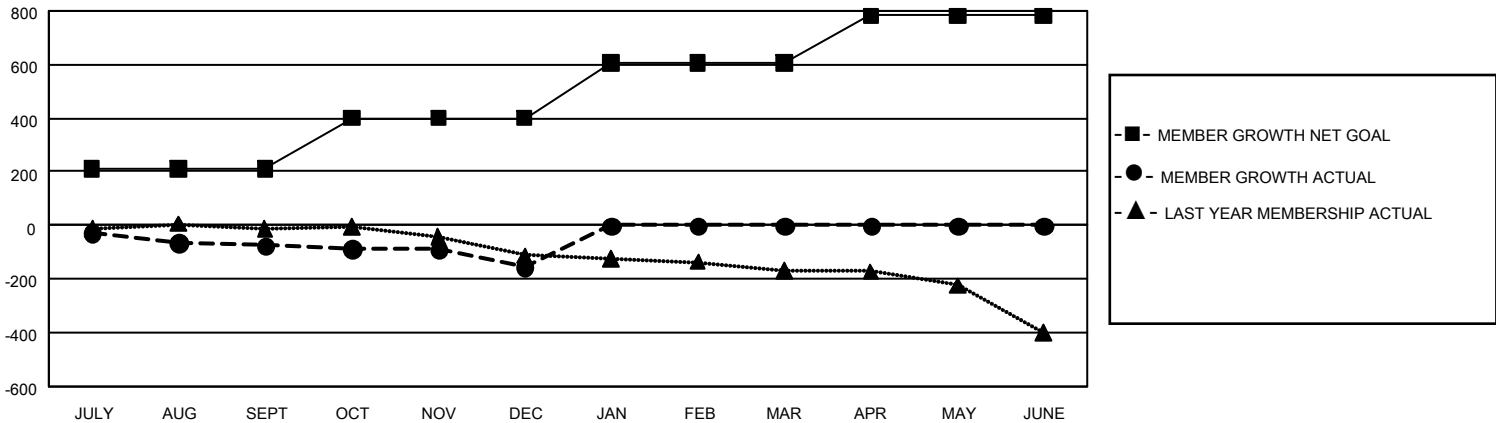
Clubs			
RESULTS FOR 2019-2020			
QUARTER	NEW CLUB GOAL	NEW CLUBS	DROPPED CLUBS
JULY/AUG/SEPT	6	0	1
OCT/NOV/DEC	0	0	0
JAN/FEB/MAR	3	0	0
APR/MAY/JUNE	3	0	0

Members			
RESULTS FOR 2019-2020			
QUARTER	MEMBER GROWTH NET GOAL	MEMBER GROWTH ACTUAL	DROPPED MEMBERS ACTUAL (including transfers)
JULY/AUG/SEPT	633	182	227
OCT/NOV/DEC	570	158	219
JAN/FEB/MAR	618	0	0
APR/MAY/JUNE	525	0	0

GOALS AND ACTUAL NEW CLUBS CUMULATIVE



GOALS AND ACTUAL MEMBERS CUMULATIVE



DROPPED CLUBS: 1	146 CLUBS OF 342 ADDED 1 OR MORE NEW MEMBERS	<b>GENDER DISTRIBUTION</b> MALE 6,289 (69.62%) FEMALE 2,744 (30.38%)
<b>DROPPED MEMBERS</b> DECEASED 75 CLUB CANCELLED 0 OTHER 369 TOTAL 444	<a href="#">CLICK HERE FOR CUMULATIVE MEMBERSHIP DATA</a>	TOTAL FAMILY UNIT MEMBERS 772 FAMILY MEMBERS PAYING HALF DUES 390